



# Reykjavik Division of Education and Leisure

Midberg Leisure Center  
*Warsaw Presentation*



M I ð B E R G



Reykjavikurborg  
Skóla- og frístundasvið

# Reykjavik Division of Education and Leisure

## OUR MISSION

*To ensure the well-being of every student,  
consistent advance and a good education  
and upbringing for lifetime achievement*



Reykjavíkurborg  
Skóla- og frístundasvið



# Reykjavik Division of Education and Leisure

- Preschools
- Compulsory Schools
- After-School Programs
- Youth Centers
- Summer Activities
- School Music Bands
- Music Schools (financial support)
- Adult Education



Reykjavíkurborg  
Skóla- og frístundasvið

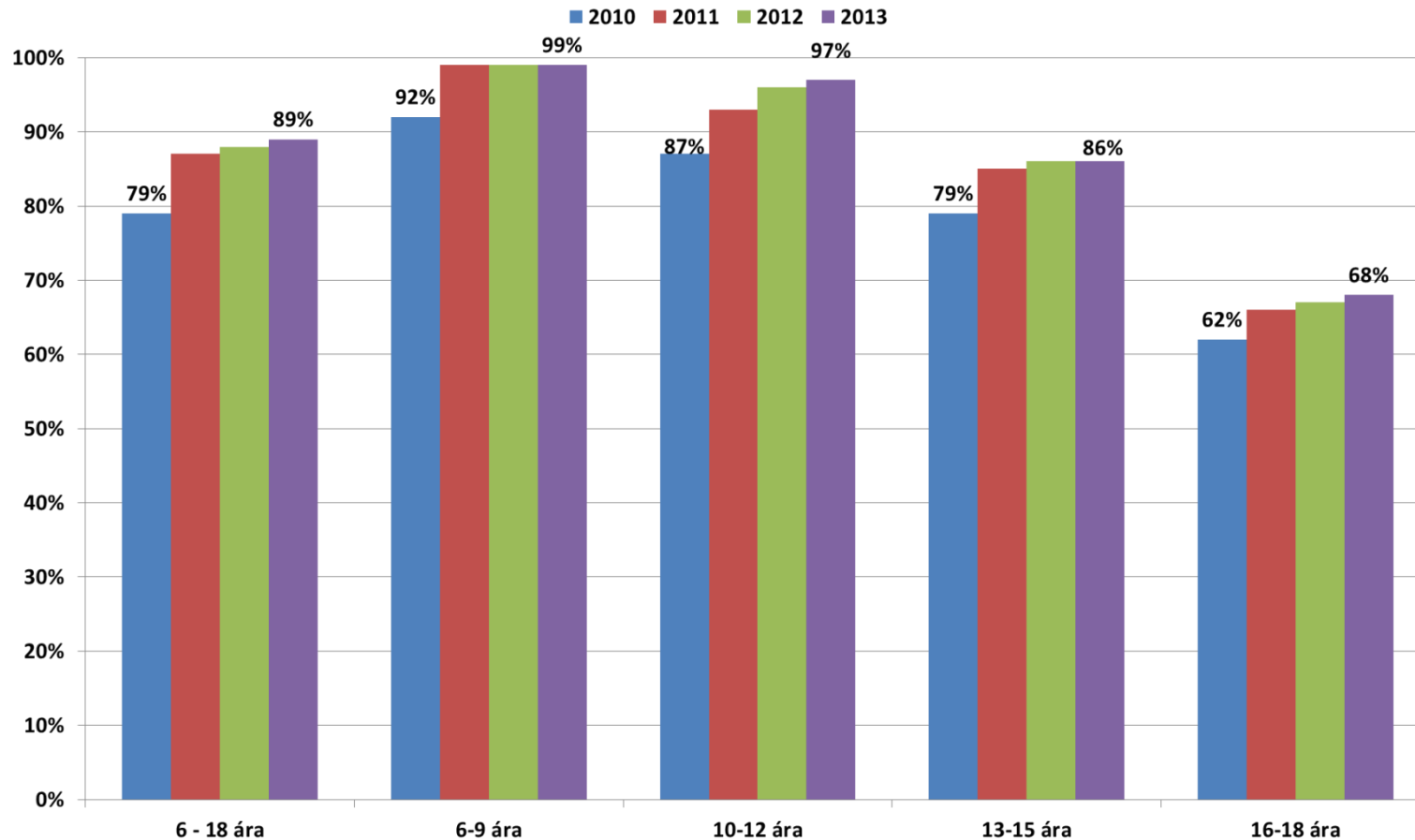


# Children and youth in Reykjavik

- **Around 90% of parents** say that after-school programs and youth centers have positive influence on their children social competence.
- **Over 90% of youth** aged 13-15 take part in some form of leisure activities.
- **Around 70%** of children aged 10-12 take part in some form of leisure activities.



# The proportion of children and adolescents in leisure activities in Reykjavik by year and age

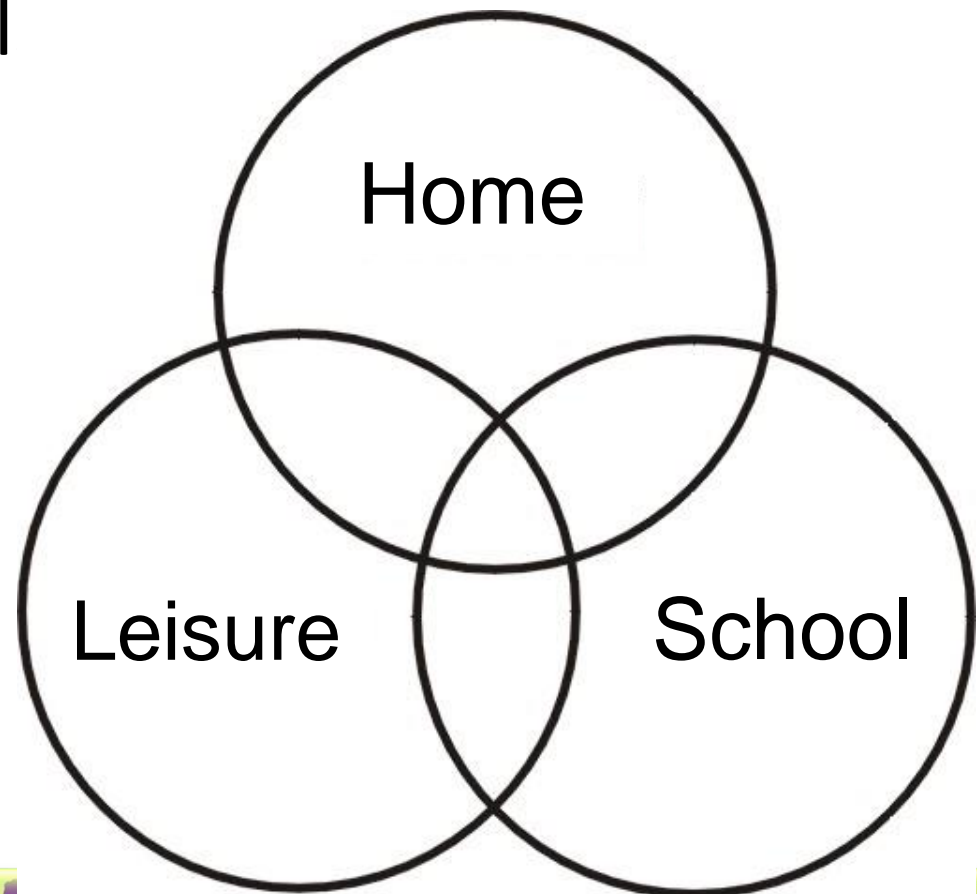


Reykjavíkurborg  
Skóla- og frístundasvið



# Our leisure core values

- Communication skill
- Social skills
- Self-image
- Social engagement



# Leisure Centers

- 6 Leisure centers throughout the city
- 33 after-school programs
  - 4.000 children 6 to 9 years
- 21 youth centers
  - 180.000 attendances yearly
- 6 leisure clubs for children with disabilities
- Various summer activities



# Borgarvefsjá

## Reykjavík

15.703 Residents  
1.884 6-16 years old



1. Vesturbær



2. Miðborg  
18.230 Residents  
1.458 6-16 years old

3. Hlíðar

4. Laugardalur



28.994 Residents  
3.464 6-16 years old

5. Háaleiti



8. Grafarvogur  
18.030 Residents  
3.145 6-16 years old



10. Úlfarsfell  
15.608 Residents  
2.442 6-16 years old



6. Breiðholt  
20.646 Residents  
2.953 6-16 years old

7. Árbær

10. Úlfarsfell

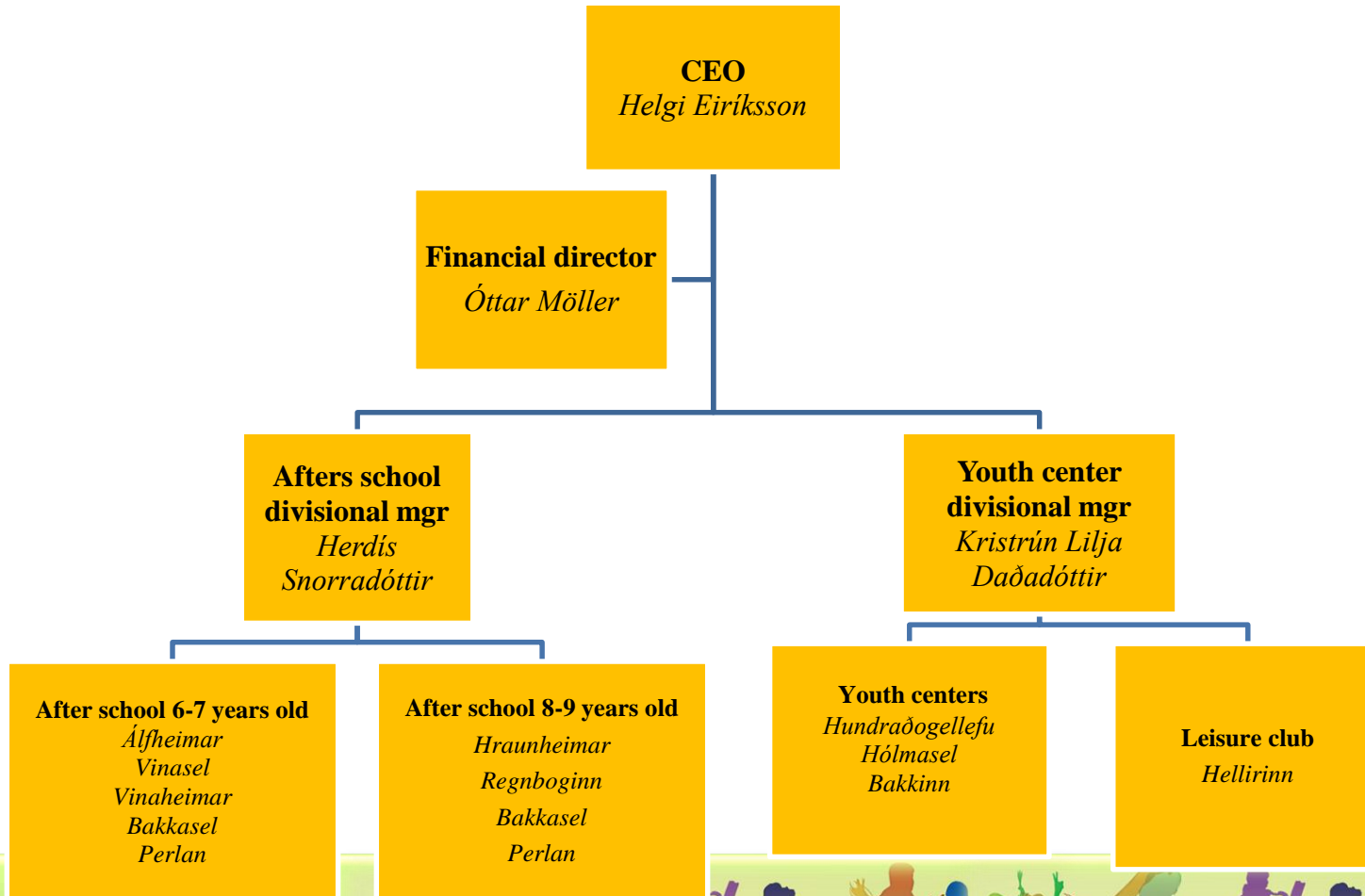


# The people

- The leisure centers are responsible and are overseeing the service and management
- Leisure Center After School Divisional Manager and Youth Center Divisional Manager are responsible for professional activities within each area
- After School Managers and Youth Center Managers are in a full time positions
- Assitants to Managers are in 70 – 100%
- Rest of staff in the After Schools and Youth Centers are part time workers in 54% or less



# Midberg Leisure Center



Reykjavíkurborg  
Skóla- og frístundasvið



- Each person can flourish and grow in an environment characterized by warmth, safety and dignity
- Emphasis is placed on the development of social skills through play and work and respect for themselves, others and their environment
- Use democratic practices to enhance the ability of children to develop their own choice so that they feel that they can influence their environment and conditions



# Democracy in After School and Youth Centers



- The idea is that the children and teenagers should influence the schedule
- The children and teenagers plan part of the activities
- Empowers children and teenagers
- Student/children council



# Midberg Youth Centers



- 3 Youth Centers in Breidholt (Bakkinn, Holmasel and 111) for children age 10-16 years old. They are serving children in five schools in Breidholt.
  - Opening hours differ between age groups and are as follows:  
For youth age **13-16 years** old opening hours are: Mondays and Wednesdays from frá kl. 14.00 – 17.00. Monday, Tuesdays and Wednesdays from 19.30 – 22.00 and Fridays from 19.30 – 23.00  
For children age **10-12 years** old opening hours are: Tuesdays and thursdays from 14.00 – 17.00.  
For young adults age **16-25 years** old we have an opening once a week on thursdays from 20.00 – 23.00.



- Hellirinn - Leisure club is for children age 10 – 16 with disabilities.
- Hellirinn is serving children from 2 districts in Reykjavik, Breidholt and Arbaer.
- Opening hours are monday through fridays from 13.30 – 17.15
- Leisure clubs have similar structure as the after school programs.



# Youth club's

- The role of youth club's is to promote positive development of young people, helping them to become more independent – both in actions and social interaction – and making them more able to face up to life's challenges.



# After school programs



- There are 7 after school programs (Alfheimar, Bakksel, Hraunheimar, Perlan, Regnboginn, Vinaheimar, Vinasel) for children age 6-9 years old serving five schools in Breidholt
- The opening hours are Monday – Friday from 13.30 – 17.15 when school is in session
- After school programs are open from 8.00 – 17.15 when school is NOT in session during wintertime. Except for winter break when school and afterschool programs are closed.
- This means we are open during holidays and on teachers organization days.





Thank you 😊



- For more information please see our website at: [www.midberg.is](http://www.midberg.is)
- School and Leisure department under [www.reykjavik.is](http://www.reykjavik.is)
- Summer activities will be available at: [www.fristund.is](http://www.fristund.is)
- Leisure card information: <http://reykjavik.is/thjonusta/fristundakortid>



Reykjavíkurborg  
Skóla- og frístundasvið

